

# The OWO Residences by Raffles: own a piece of British history

Iconic Old War Office building in London will feature 85 homes, a hotel and restaurants

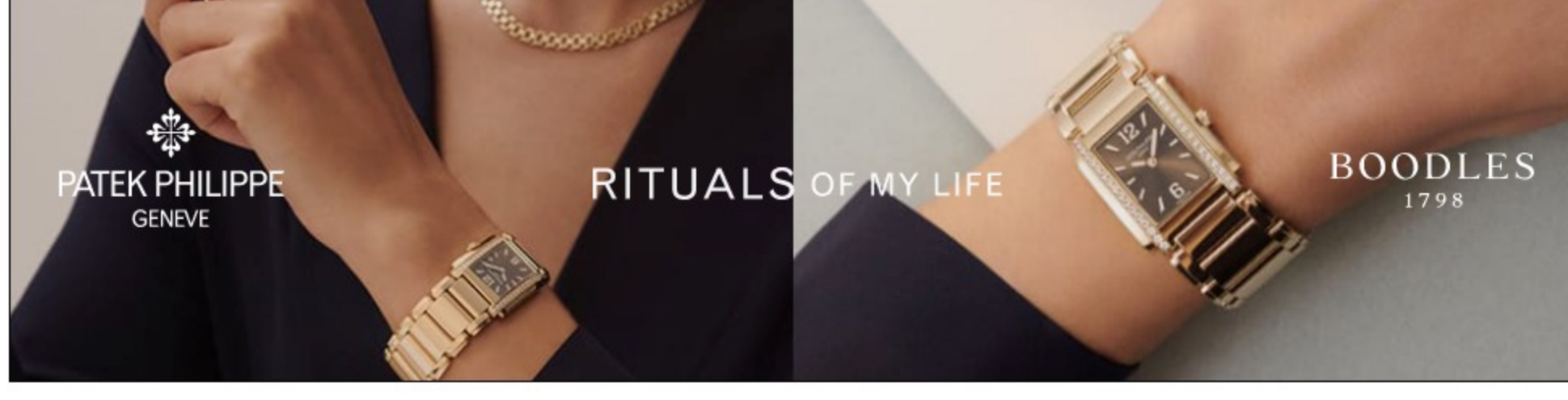
15 JUN 2021

After being closed to the public for more than a century, the Grade II\*-listed former Old War Office in London is being given a new lease of life. Set for completion in 2022, the iconic building is being transformed into the capital's first Raffles hotel with 125 rooms and suites, a collection of nine restaurants and bars, and a spa.

It's not just hotel guests and visitors who will get to enjoy the plush new surroundings - but also home buyers looking to purchase a piece of Winston Churchill's legacy. The site will feature The OWO Residences by Raffles, Europe's first Raffles branded residences, and sales have now begun. Prices for a two-bedroom residence start from £5.8m via estate agents Knight Frank and Strutt & Parker.

New images, below, show what the residences will look like once they are complete.

Advertisement - Article continues below



The OWO in London Grain London

## London landmark

Located on Whitehall, the Old War Office was originally completed in 1906 and designed by British architect William Young. Having undergone a huge transformation over the last five years, the London landmark is set to reopen its doors next year.



Living room at The OWO Residences by Raffles Grain London

## Unique properties

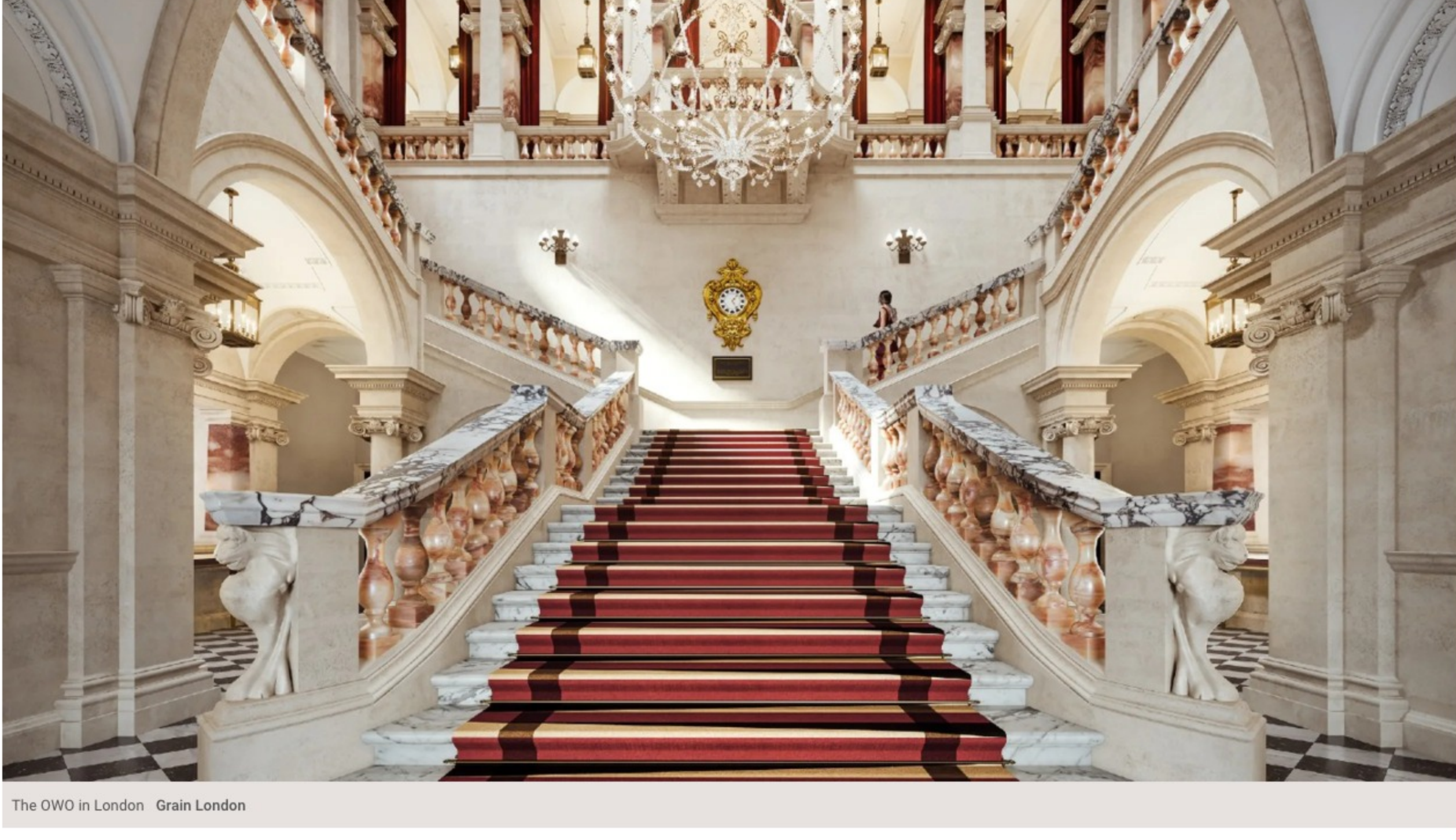
There will be 85 homes available for sale in The OWO Residences by Raffles. Each residence is unique and specifically tailored to suit its location in the building; duplex, lateral and penthouse residences range in size from studios to five-beds.



Master bedroom at The OWO Residences by Raffles Grain London

## Bespoke design

The residences feature interiors created by design studio 1508 London with bespoke handcrafted kitchens from British brand Smallbone of Devizes, Waterworks brass ironmongery and Onyx marble.



The OWO in London Grain London

## Heritage features

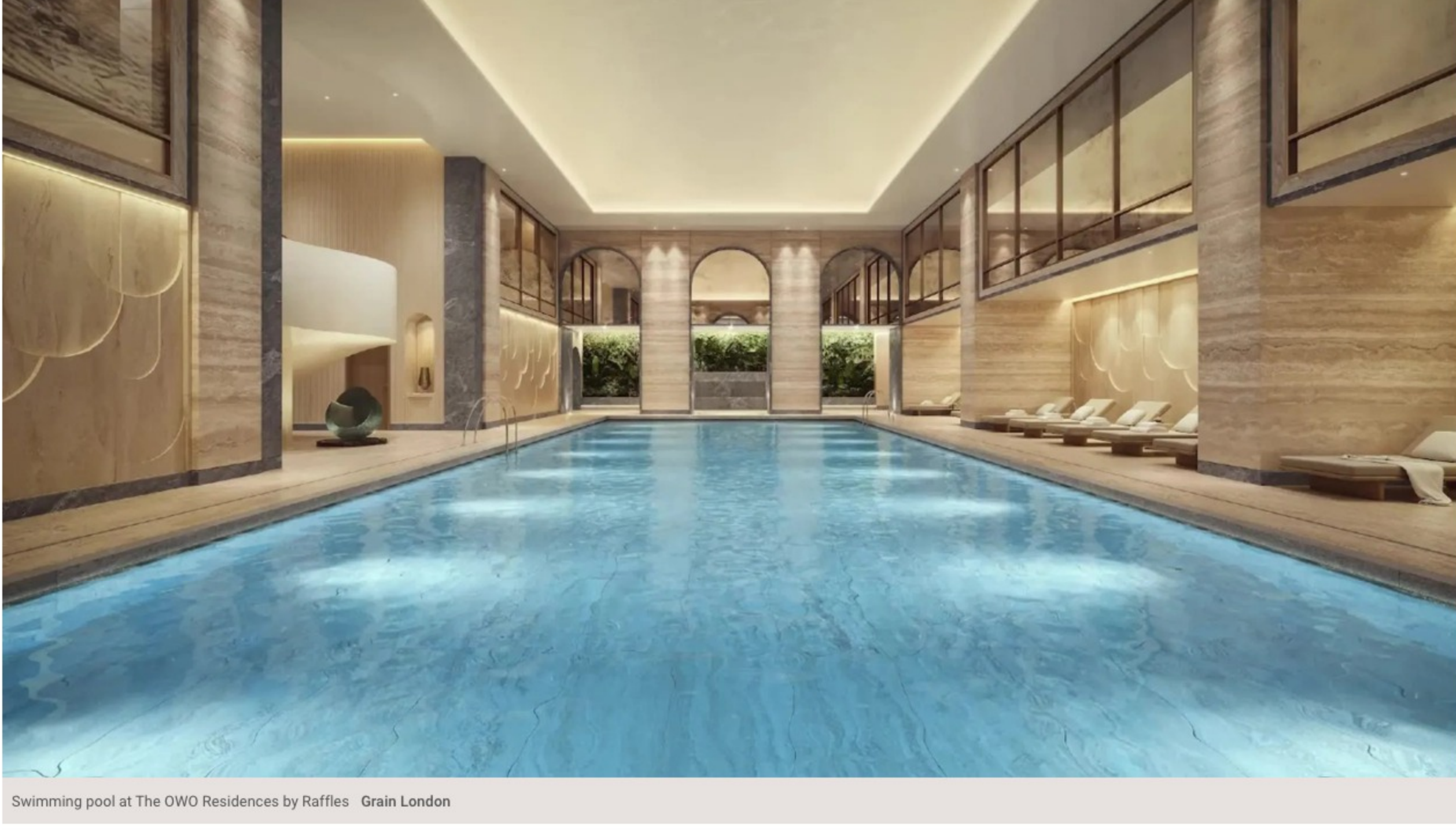
The building and many of the residences will incorporate original heritage features such as oak panelling and mosaic flooring.



The terrace at one of the turret apartments Grain London

## Above the skyline

Two spectacular turret residences, elevated above the London skyline, will also feature in this mixed-use development.



Swimming pool at The OWO Residences by Raffles Grain London

## Pool and gardens

Homeowners will benefit from having all the facilities of a world-renowned hotel on their doorstep as well as use of a residents' swimming pool and garden.



An aerial view of The OWO Grain London

## Stunning location

The OWO directly faces Horse Guards and is adjacent to the stunning 57-acres of St. James's Park. Residents, hotel guests and visitors will be a short stroll from Buckingham Palace, The National Gallery, The Tate and The Royal Academy, as well as the shopping options on Regent Street, Bond Street and Jermyn Street. See more at theowolondon